

Pro-Core⁺ School Reports Program On-Track Program Module

Pro-Core⁺ Program On-Track Menu

The Pro-Core⁺ program On-Track data tool is a test data analysis module that compares your students' Pro-Core test scores and related state standard scores on the state tests. It uses normal curve equivalents (NCEs) to--

- generate projected proficiency cut-scores for the school year,
- show school, class, student growth between the Pro-Core pre-test and interim or post-test, which is used to determine teacher effectiveness ratings,
- identify (flags) students who may need individual attention, and
- correlate student actual state test results with student Pro-Core test results (optional)

Your Pro-Core test scores and state standard scores are collected and imported into this module. Individual student results are then merged into this year's Pro-Core School reports to assist administrators and teachers in planning curriculum and setting goals based on data-driven instruction. Additional school and/or district reports are also generated from the On-Track Reports Menu.

There are two main *categories* of the 13 Pro-Core⁺ On-Track Reports:

- 1) **School Reports** – “S” Reports give information most useful at each school.
→ *students, teachers, school support staff, the principal*
- 2) **District Reports** – “D” Reports give information most useful at the district level.
→ *the superintendent, district support staff, curriculum specialists*

Options School or District Reports

Options Form A Form B Form C or ALL

to Statistical Reports

On Track Reports program menu

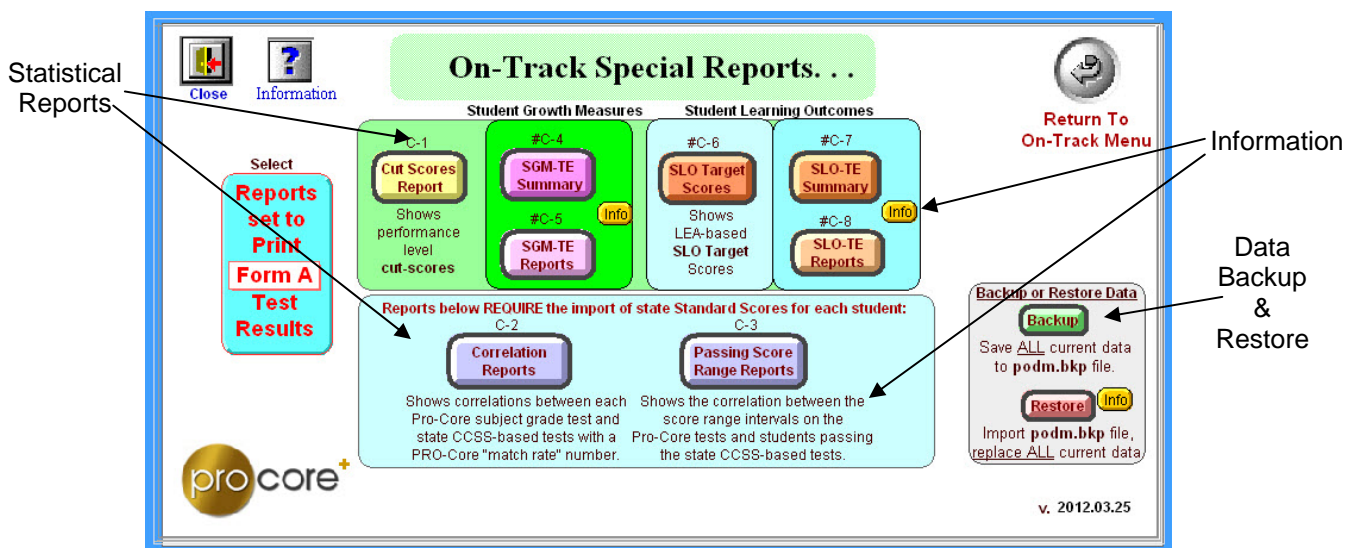
There are 4 sets of parallel reports. In districts with only one school using the Pro-Core system, “S” (School) and “D” (District) reports will generate essentially the same information and, therefore, are interchangeable. Districts with multiple schools may select individual school reports from the sub-menu. “School” is the selected *default* category.

“S” reports are organized by each individual school and *drill down* to each grade subject, teacher class, and individual student, providing various “snapshots” and groupings to assist principals and teachers in goal setting and planning data-driven instruction.

- SD-1 Student Report—shows students at each performance level in each school
- S-2 Subjects Summary— shows the number of students at each performance level with cut-scores in each subject grade test in each school
- S-3 Subjects Classes Summary—shows the number of students at each performance level with cut-scores in each teacher’s subject grade class test in each school
- S-4 Subjects Students Report – shows the students at each performance level in each subject grade test in each school
- S-5 Classes Summary – shows the number of students at each performance level with cut-scores in each teacher’s subject grade class test in each school
- S-6 Classes Students Report – shows the students at each performance level in each teacher’s class in each school
- SD-7 Subject Class Students Report – shows the students at each performance level in each teacher’s subject grade class test in each school

“D” reports are organized by all district schools and *drill down* to each grade subject, teacher class and individual student, providing “snapshots” of overall test results to assist administrators and specialists in planning curriculum and making data-driven district decisions.

- DS-1 Schools Summary – shows the number of students at each performance level in all district schools
- D-2 Subjects Summary – shows the number of students at each performance level with cut-scores in each subject grade test in all schools
- D-3 Subjects Classes Summary – shows the number of students at each performance level in each subject grade test in each teacher’s class in all schools
- D-4 Subjects Students Report – shows the students at each performance level in each subject grade test in all schools
- D-5 Classes Summary – shows the number of students at each performance level with cut-scores in each teacher’s subject grade class test in all schools
- D-6 Classes Students Report – shows the students at each performance level in each teacher’s subject grade class test in all schools



On-Track Special Reports menu

Special Reports – “C” Reports give statistical information regarding cut scores, student growth, and teacher effectiveness.

There are 8 statistical and correlation “C” reports in the On-Track Special Reports layout.

- C-1 Cut-Scores Report – shows passing cut-scores for state tests and matching performance level cut-scores for the Pro-Core Tests
- C-2 Correlations Report – shows correlations between each Pro-Core subject grade test and the state tests with a Pro-Core "prediction match rate" number.
- C-3 Passing Score Range Reports – show the correlation between the score range intervals on the Pro-Core tests and students passing the state tests.
- C-4 SG-TE Summary – Shows teacher-class Student Growth NCE averages with Teacher Effectiveness ratings using state-approved methodology.
- C-5 SG-TE Reports – Shows Student Growth and NCE scores with Teacher Effectiveness ratings using state-approved methodology, and student pre- and post-tests scores with performance codes.
- C-6 SLO Target Report—Shows student pre-test scores, performance codes, and LEA-determined target growth increases and Growth Target scores.
- C-7 SLO-TE Summary—Shows teacher-class pre- and post-test averages and increases with Teacher Effectiveness ratings based on LEA-determined growth objectives met.
- C-8 SLO-TE Report—Shows student pre- and post-test scores, performance codes, and actual increases with Teacher Effectiveness ratings based on LEA-determined growth objectives met.

List View and Form View layouts allow the user to find and view individual student raw data with matching records and scores. *See Appendix B* for samples of each On-Track report.

Exporting Data From the On-Track Module

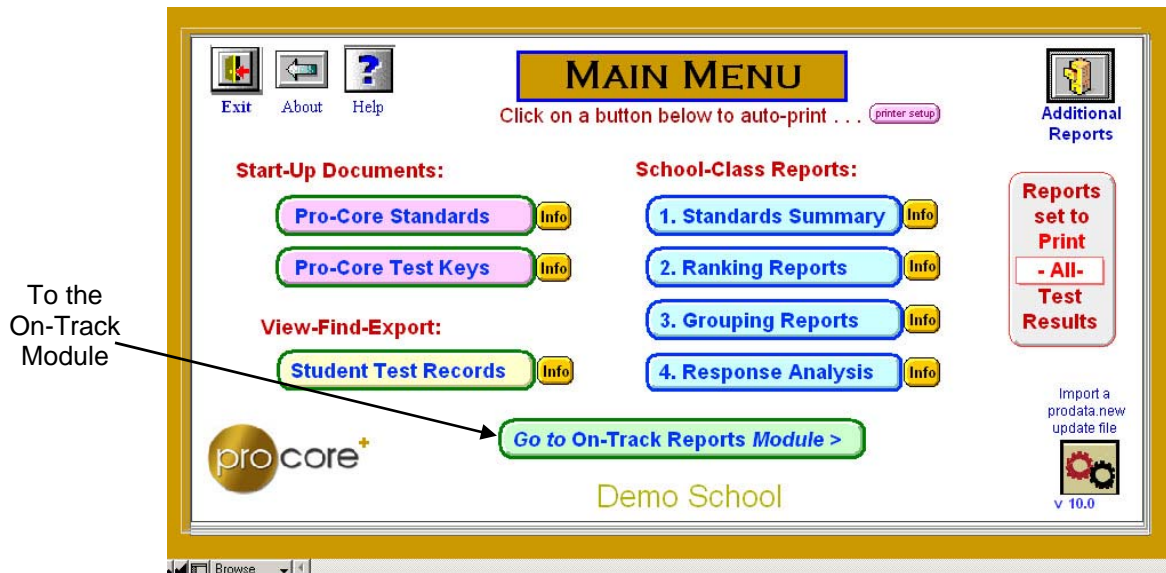
The **On-Track module** contains a variety of reports for *only* pre-post test records and related student growth-teacher effectiveness data. (*See Appendix B*). The On-Track module is contained within a school’s individual P-C School Reports Program, OR it may be sent to a district office as a separate program containing the pre-post data for all district schools.

Any or all data contained in the programs may be exported in various formats to any spreadsheet file. Below are samples of three **pre-formatted exports** available to users in csv (comma-separated values (plain text) format).

Since csv report data is exported without column labels, it is best to print out the report to paper first. Then the exported data can be matched to the column headers in the printed report. Below are directions on exporting data with samples of the pre-configured export files *with column labels added*. Exported files are normally saved to the program folder.

The On-Track module contains three pre-formatted export files with all “on-track” test data related to student performance, student growth, and teacher effectiveness.

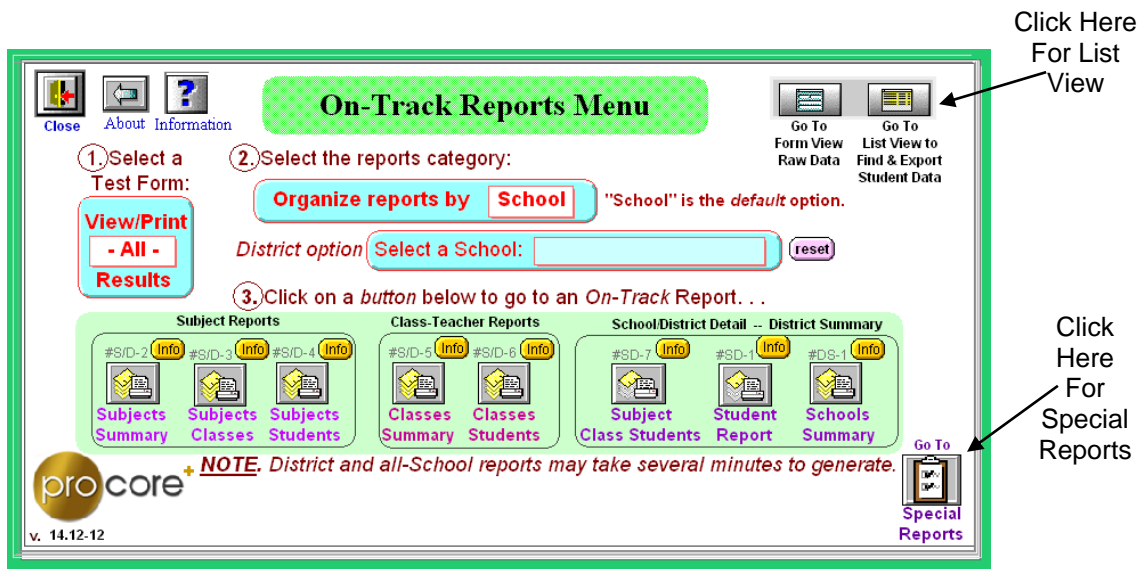
From the Main Menu of the School Reports Program, click “Go to On-Track Reports Module” *button*.



Main Menu Window

Pro-Core On-Track Module Exports

If you have received a stand-alone *district* On-Track program module, you will see the On-Track Reports Menu when the program is first opened.



On Track Reports program menu

On-Track data.csv: Student Performance List

From the On-Track Reports Menu, click on the “Go to List View to Find & Export Student Data” *button*, located at the top right of the window.

The Student Performance List View shows all the pre- and post-test student records (Form A, B or C) including Normal Curve Equivalent (NCE) results. Records may be sorted by clicking on the column headings. Records may also be *found* and printed or exported from this layout.

Student ID	SGS	Student last	Student first	Gr	Gen	SPcode	Test Key	P-C% Score	P-C Code	P-C %pre-% diff	Teacher Name	ClassID	District School	P-C NCEs	Reports Menu
170317		Ambrose	Ethan		M	10000	W1A	56.0	A		Addams3	103	ECLHIG	82	
170317	-1	Ambrose	Ethan	9	M	10000	W1C	54.0	P	56.0 -2.0	Addams3	109	ECLHIG	61	-20
150399		Armitage	Veronica		F	10000	W1A	40.0	A		Addams3	103	ECLHIG	51	
150399	-1	Armitage	Veronica	9	F	10000	W1C	42.0	P	40.0 2.0	Addams3	109	ECLHIG	25	-26
170319		Baer	Jenna		F	10000	W1A	38.0	A		Addams3	103	ECLHIG	47	
170319	-0	Baer	Jenna	9	F	10000	W1C	48.0	P	38.0 10.0	Addams3	109	ECLHIG	43	-4

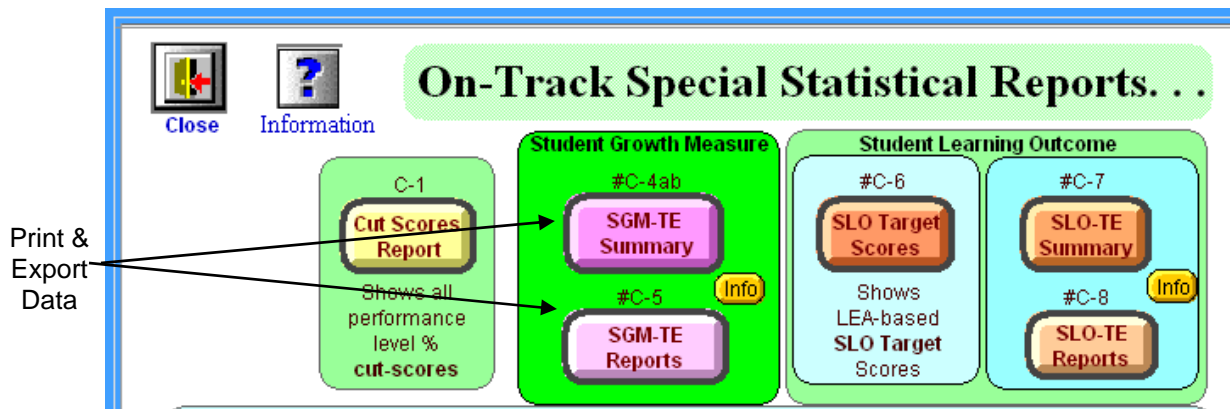
On Track Reports List View

Below is a sample Student Performance **On-Track data.csv** file *with column labels added*.

School	Teacher-group	StudentID	SGS Student	Student Name	Grade	Gender	SP Code	P-C Subject	P-C %	Pcode	P-C%pre-	P-C% diff	NCE score	NCE diff
Demo HS	ADDAM5	170317		Anton, Ethan	9	M	10000	WHis1A	56	A			88.001271	
Demo HS	ADDAM5	170317	-0.34133414	Anton, Ethan	9	M	10000	WHis1B	54	A	56	-2	77.83634	-10.1649
Demo HS	ADDAM3	150399		Arms, Veronica	9	F	10000	WHis1A	40	A			54.59356	
Demo HS	ADDAM3	150399	-0.069274138	Arms, Veronica	9	F	10000	WHis1B	42	P	40	2	52.530576	-2.06298

Student Growth-Teacher Effectiveness Record Exports

From the On-Track Reports Menu, click on the “Go to Special Reports” *button*, located at the bottom right of the window (*see previous page above*).





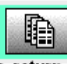
On Track Special Statistical Reports menu

Two Student Growth-Teacher Effectiveness Reports data may be exported from here.

SGM-TE summary.csv: Student Growth-Teacher Effectiveness Summary [C-4]

The SG-TE Summary report shows all pre- and post-test teacher-class records (Form A, B or C) including Normal Curve Equivalent (NCE) differences. Reports may be *printed* with teacher results grouped by “same” or “mixed” classes. The *export* file summarizes only individual teacher class results.

Export Print

Export.csv Print C-4a return

Pro-Core⁺ Student Growth-Teacher Effectiveness Summary
 Grouped by Same-Subject Classes East Clinton High School

SCHOOL NAME - [East Clinton High School](#)

SGS TEACHER - Class #	Subject-Grade	Effectiveness Rating	Total Student Count	Pre-Test %Av.	Post-Test %Av.	Pre-Post %Av.Dif.	NCEs Av.Diff.	Met Growth Measure?
-0 EAST CLINTON HIGH SCHOOL			18 students					
+0 ADDAMS	100 World Hist B 3	Average Effectiveness	9 students	38.3	40.9	3.5	4	4 of 8
+0 ADDAMS1	107 World Hist B	3 Average Effectiveness	9 students	38.3	40.9	3.5	+ 4	4 of 8

Student Growth-Teacher Effectiveness SUMMARY (C4) view




Below is a sample **SGM-TE summary.csv** export file *with column labels added*.

School	Teacher-group	ClassID	Subject	SGS Av.	Teacher Class Ranking	av.pre%	av.post%	av.post-pre%	av.NCEdif	MetGrowth	tot.count
Demo Middle	JEFFERSON2	152	Soc8B	-1	3 Average Effectiveness	40.4	59.6	18.8	-3.40188669	11	30
Demo Middle	JEFFERSON3	153	Soc8B	0	3 Average Effectiveness	34.6	52.4	18	0.396540717	5	14
Demo Middle	JEFFERSON4	154	Soc8B	0	3 Average Effectiveness	36.2	56.5	20.7	1.318457296	13	26
Demo Middle	JEFFERSON5	155	Soc8B	-1	3 Average Effectiveness	36.7	52.4	15.8	-5.09901726	8	24
Demo Middle	JEFFERSON6	156	Soc8B	-1	3 Average Effectiveness	41.6	59.9	17.7	-5.46745916	5	19

SGM-TE report.csv: Student Growth-Teacher Effectiveness Report [C-5]

The SG-TE Report shows all the pre- and post-test teacher-class AND student records detail (Form A, B or C) including Normal Curve Equivalent (NCE) differences.

Export Print

Export.csv Print C-4a return

Pro-Core⁺ Student Growth-Teacher Effectiveness Summary
 Grouped by Same-Subject Classes East Clinton High School

SCHOOL NAME - [East Clinton High School](#)

SGS TEACHER - Class #	Subject-Grade	Effectiveness Rating	Total Student Count	Pre-Test %Av.	Post-Test %Av.	Pre-Post %Av.Dif.	NCEs Av.Diff.	Met Growth Measure?
-0 EAST CLINTON HIGH SCHOOL			18 students					
+0 ADDAMS	100 World Hist B 3	Average Effectiveness	9 students	38.3	40.9	3.5	4	4 of 8
+0 ADDAMS1	107 World Hist B	3 Average Effectiveness	9 students	38.3	40.9	3.5	+ 4	4 of 8

Student Growth-Teacher Effectiveness REPORT (C5) view

Below is a sample **SGM-TE report.csv** export file *with column labels added*.

School	Teacher-group	ClassID	Subject	SGS Av.	Teacher Class Ranking	SGS Student	Student Name	StudentID	Grade	Gender	Spcode	pre-%	preNCE	post-%	Pcode	postNCE	post-pre%	NCEdif	MetGrowth
Demo Mid	JEFFERSON2	152	Soc8B	-1	3 Average Effectiveness	-0.45138114	Alvarez, Luis	22968	8	M	D	24	28	28	B	15	4	-13.44213	No
Demo Mid	JEFFERSON2	152	Soc8B	-1	3 Average Effectiveness	0.56901348	Bento, Joshua	23202	8	M		34	46	66	A	63	32	16.945221	Yes
Demo Mid	JEFFERSON2	152	Soc8B	-1	3 Average Effectiveness	0.33465074	Brush, Andrew	24406	8	M		28	35	52	A	45	24	9.965899	Yes
Demo Mid	JEFFERSON2	152	Soc8B	-1	3 Average Effectiveness	-0.67987026	Crimm, Jordan	23151	8	F		46	68	54	A	48	8	-20.24654	No

For your convenience, an Excel spread sheet with samples of each export is available from which you may copy and insert the above labels. *Contact your Pro-Core representative for further information*